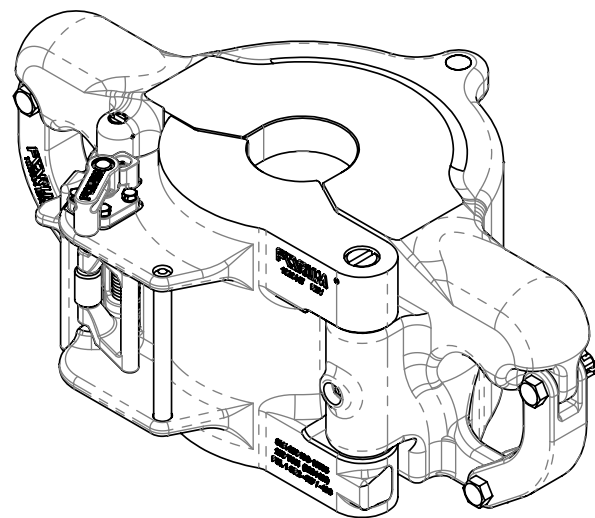
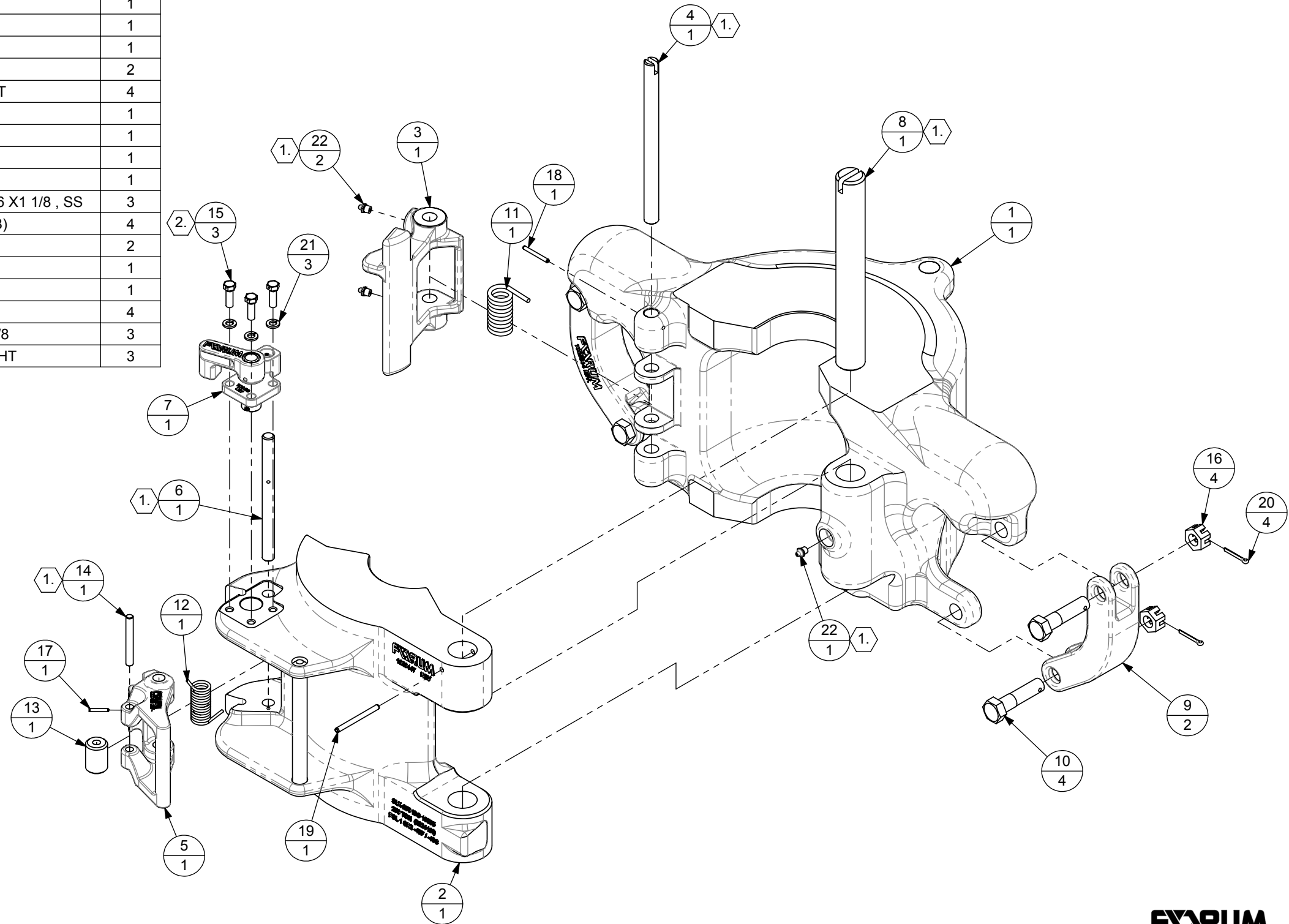


ITEM NO.	PART NUMBER	DESCRIPTION	QTY.
1	1029446	BODY	1
2	1029448	DOOR	1
3	1029449	LATCH	1
4	1029450	LATCH PIN	1
5	1029452	LATCH LOCK	1
6	1029453	LATCH LOCK PIN	1
7	1029454	SECONDARY LATCH LOCK	1
8	1029686	HINGE PIN	1
9	1025864	LINK BLOCK	2
10	E8145-2	LINK BLOCK RETAINER BOLT	4
11	E31383	LATCH SPRING	1
12	E31404	LATCH LOCK SPRING	1
13	E31407	ROLLER	1
14	E31584	ROLLER PIN	1
15	50006-09-SD	SCREW, CAP-HEX HEAD (UNC 2A)3/8-16 X1 1/8 , SS	3
16	50512-C	NUT, HEX-SLOTTED (UNC-2B)	4
17	51635-08-S	PIN, ROLL	2
18	51603-14-S	PIN, ROLL	1
19	51604-24-S	PIN, ROLL	1
20	51435-10	COTTER PIN	4
21	50906-C	WASHER, LOCK-REGULAR 3/8	3
22	53226-02-01-A-10-01A	GREASE ZERK, NPT, STRAIGHT	3

NOTES:  
 1. APPLY GREASE TO ITEM AS SHOWN  
 2. WIRE TIE ADJACENT BOLTS TOGETHER  
 3. SECONDARY LATCH LOCK SHOWN IN LOCK POSITION



DO NOT SCALE DOCUMENT	THIRD ANGLE PROJECTION	ECO #: 05039	ORIGINAL APPROVAL		DESC: 4 1/2 - 9 5/8 SLX-250 ELEVATOR ASSEMBLY
PROPRIETARY INFORMATION: THIS DOCUMENT CONTAINS PROPRIETARY INFORMATION, AND SUCH INFORMATION MAY NOT BE DISCLOSED TO OTHERS FOR ANY PURPOSE NOR USED FOR MANUFACTURING PURPOSES WITHOUT WRITTEN PERMISSION FROM FORUM OILFIELD TECHNOLOGIES, INC.		PREPARED BY: jblanchard	DATE: 08/30/12	PREPARED BY: crichter	DATE: 06/22/11
		CHECKED BY: sfalcon	DATE: 08/30/12	CHECKED BY: crichter	DATE: 7/18/2011
		APPROVED BY: lchildress	DATE: 08/30/12	APPROVED BY: lchildress	DATE: 07/18/11
		WEIGHT: 539.46 LBS		DRAWING # 1029437	
		SHEET SIZE B		SHEET 1 OF 2	
				REVISION B	

4

3

2

1

D

D

C

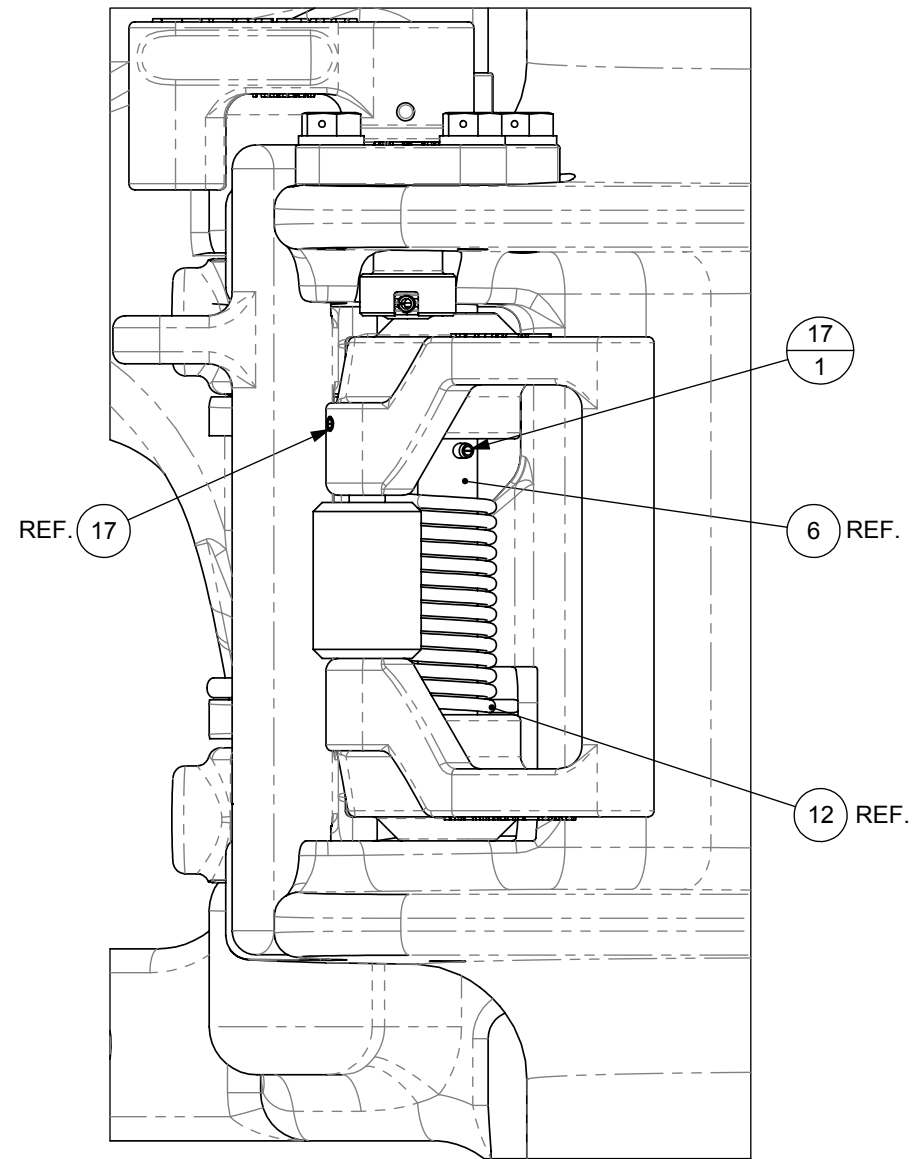
C

B

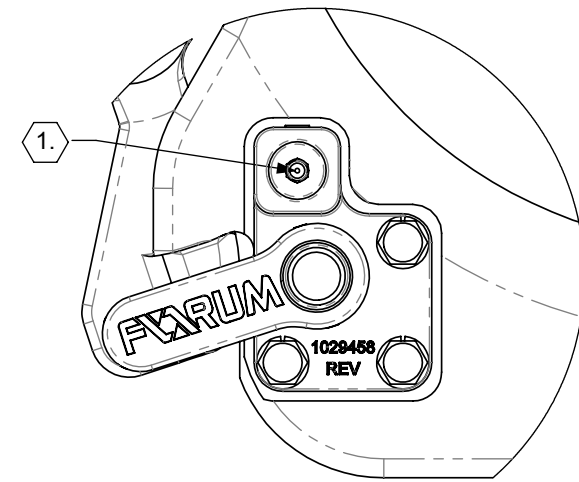
B

A

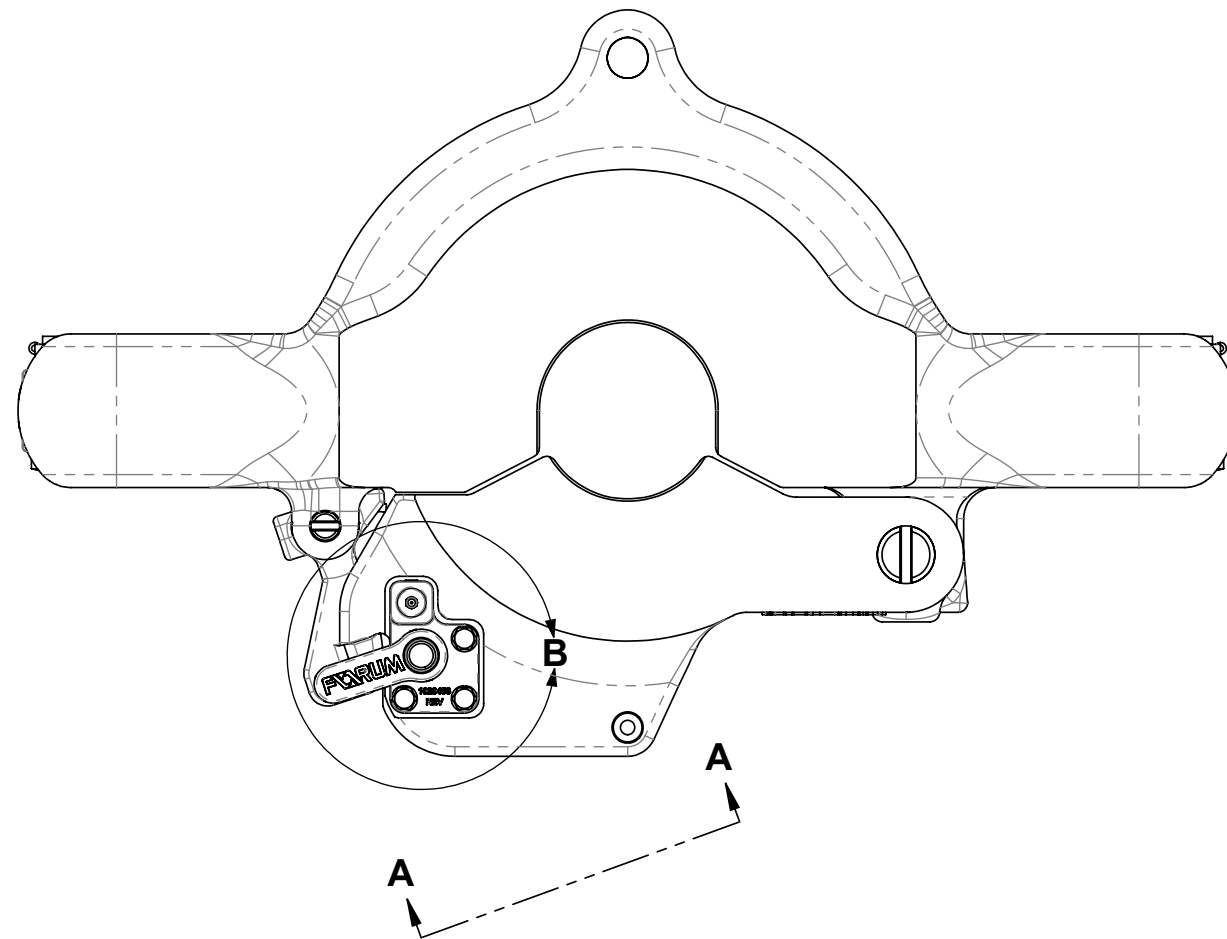
A



**VIEW A-A**



**DETAIL B**



**FORUM**

DESC: 4 1/2 - 9 5/8 SLX-250 ELEVATOR ASSEMBLY		
WEIGHT 539.46LBS	DRAWING # 1029437	
SHEET SIZE B	SHEET 2 OF 2	REVISION B

4

3

2

1